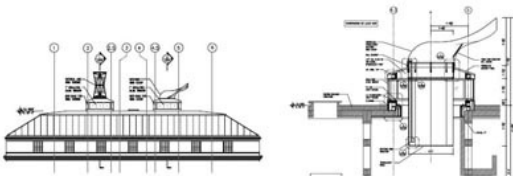
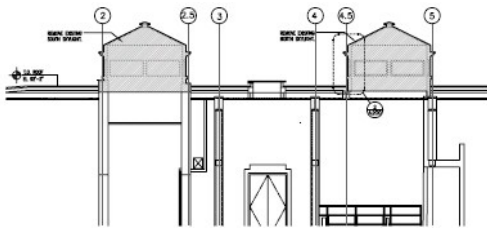


Goetz Architectural Technologies



Bucky Dome - restoration underway



Staten Island Children's Museum



Bucky Dome - in Our Shop

Composite Parts and 35 Years of Innovation

Eric Goetz began the process of perfecting composite construction in 1975. Since then, the company has been a leader and pioneer in the composite industry. Eric Goetz currently teaches and consults with MIT, Yale and the Rhode Island School of Design as they develop their interests in composite buildings and architecture.

Goetz's unique experience, skill set, and expertise is leveraged when building large composite structures. The company has delivered more large and complex custom composite structures than anyone in North America. Our customers include some of the most demanding titans of industry such as Roy Disney, Ted Turner, George David, and Larry Ellison. Goetz is simply the most qualified source for large composite parts that will see extreme weather and stress.

Tools and molds are cut in house with the company's CNC router. Many of our larger projects have been shipped via barge from Bristol harbor. Most of our dedicated workforce lives within a 10 mile radius of our facilities; many tenures have exceeded 15+ years with the company.

Engineering Talent

Goetz assigns engineers to projects that leverage their respective skill sets. Different project requirements require a different mix of talents including, but not limited to, design, composites and structural engineering, finite element analysis and surface modeling. When appropriate, we contract with additional specialists. For example, the victorious America³ (America's Cup) campaign, drew on the expertise of engineers from Stanford University's Department of Aeronautics and Astrophysics, engineers from Lockheed and experts from Hercules Aerospace, in addition to our in-house resources.

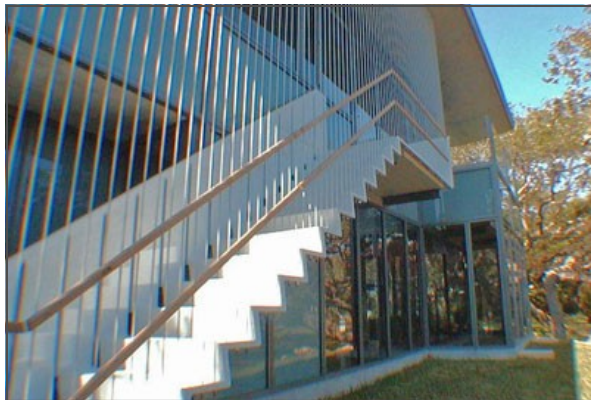
Staten Island Children's Museum project design and image by Marpillero Pollak Architects.



Goetz Projects



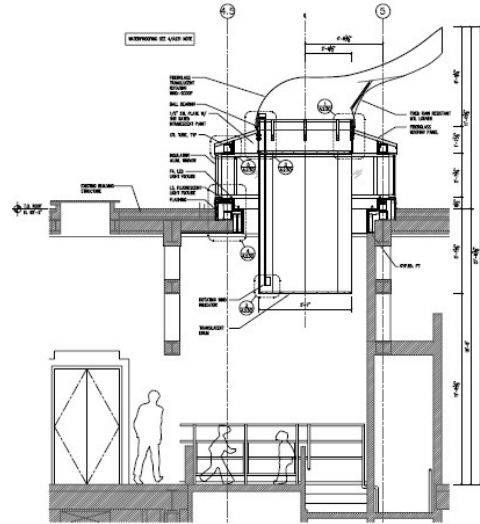
165' Composite Library



Composite Staircases in Florida



Ms. Mori - Extreme Fabrics - Built by Goetz



Staten Island Children's Museum

Projects

Currently Goetz is building two custom cupolas and a windvane for the Staten Island Children's Museum. We are using high tech techniques to measure the building and build the parts. Field measurements will be taken by scanning the building and steel structures [accuracy +/- 0.1mm] and parts will be built to match from CNC cut molds.

Goetz is also performing a museum grade restoration on the 24' diameter Bucky Fly Eye Dome.

Architectural Experience

Goetz technicians built and delivered the 165' composite / wood veneered library that hangs in the Corporate Headquarters of the American Yazaki Corporation. The structure was built in two halves in our shop in Bristol RI. We cut the halves into four road legal pieces [82'x16'] and trucked these to the jobsite in Canton, Michigan. We sent 7 technicians to assemble the finished library in the air where it hangs in the Atrium from the beams that support the fourth floor. We worked alongside our union colleagues to seamlessly complete this signature piece

Goetz has built exterior composite staircases in Florida, cabin roof top sections and a municipal water pipe support structure that lives underwater.



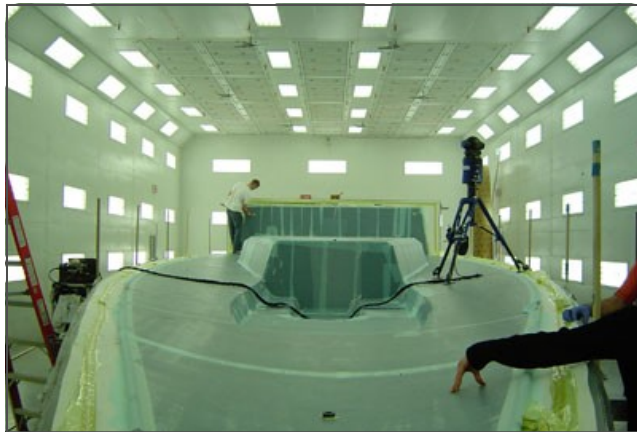
Facilities and Capacities



Facilities At 115 Broad Common



CNC Cutter



100' x 30' x 16' Oven



Goetz Safely Rolls an 82' Composite Part

Facilities and Equipment

Goetz corporate headquarters are located at 251 Franklin St in Bristol. The space also includes a medium size shop space which houses our CNC machine and is set up to facilitate smaller jobs.

Our 90' oven and spray booth handles builds to 85'. The company also owns a smaller 20' oven housed at 115 Broad Common. When needed, additional space at 115 allows us to build up to 120'.

For each project, resources are analyzed and the appropriate facility(s) is chosen to optimize results and control.



251 Franklin Street



About the Company



About the Company

Chase Hogboom

President

Eric Goetz

Chief Technology Officer

Steve Barker

EVP Sales

Will Collins

Marketing & Business Development

Goetz's composites parent company, Composite Energy Technologies, Inc (CET), a Rhode Island corporation, is structured to leverage the talents of professional management, technological expertise, and product development to deliver cutting edge results for the composite industry.

Many project managers, foremen, and composite technicians have worked under CTO Eric Goetz for 15+ years.

Advisory Board

contact details available upon request

Charlie Leighton

New York Yacht Club, Past Commodore, Former Chairman & CEO CML Group (NYSE) Holdings included: NordicTrack, Boston Whaler, Lahey Clinic, Trustee; MetLife, Past Director, Past Harvard Business School Instructor

Peter T. Francis

Former Chairman, President and CEO J. M. Huber, diversified multinational; Board Member, Dover Corporation, NYSE, diversified multinational; Past Boards: Stanford Graduate School of Business, New Jersey Institute of Technology

Dave Ford

Founder Orca (Purchased by Nettapp) Board Chairman Herreshoff Marine Museum Experienced angel investor in high tech startups

